

SF02, SF10, SF30 Additional Setup Instructions

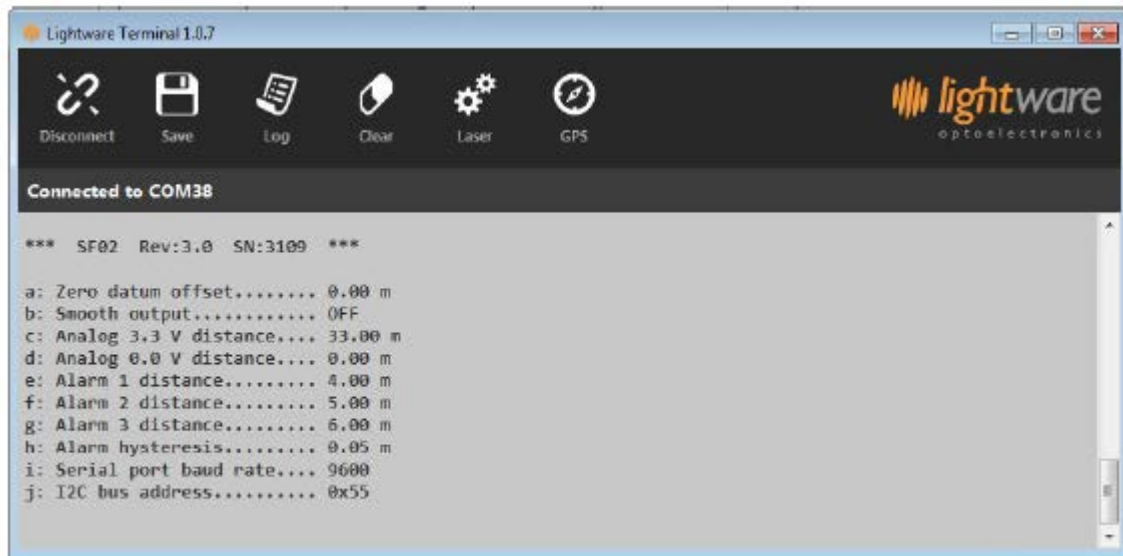
1. Connecting Your Laser Rangefinder

- Install **Lightware Terminal 1.0.7**
 - <http://www.lightware.co.za/shop/en/content/8-software>
- Plug your USB A side of cable to your computer, and Micro B cable side to your Laser Rangefinder USB port
- Launch the **LightWare Terminal**
- Click the connect button
 - Connected notification will appear on the terminal
- Hit the spacebar key on your keyboard to access your Laser Rangefinder setting menu.

2. Navigating the LightWare Terminal

Now that you are connected to your Laser Rangefinder and have access to the settings menu, follow these instructions to set the device.

- a) Setting up your SF02
 - The SF02 #28043 example code provided on our Parallax Website requires the Serial Port Baud Rate to be set to 9600. You can achieve that by pressing the “T” key on your keyboard until the desired baud rate is achieved, as shown below.



1.1 SF02 settings menu

b) Setting up your SF10

- The SF10 #28053 example code provided on our Parallax Website requires the Serial Port Baud Rate to be set to 9600. You can achieve that by pressing the “C” key on your keyboard until the desired baud rate is achieved, as shown below.



1.2 SF10 settings menu

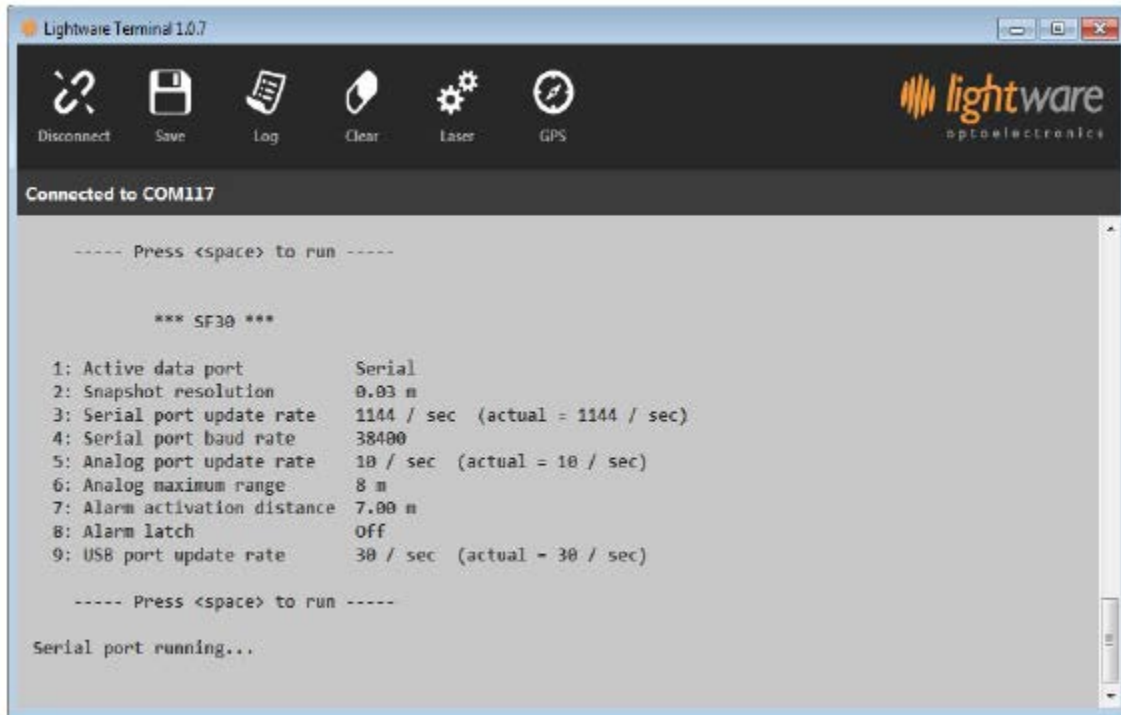
c) Setting up your SF30

- Please refer to the code notes for setting your SF30 #28057 to specific setting values as required by the code. Hit “spacebar” on your keyboard to access the SF30 settings, see the screen capture below.



1.3 SF30 settings menu

- Press 1 key on your keyboard to set the active data port
- To access the Serial port, select Serial
 - i. To access the USB port, select USB
- Press 2 to set the snapshot resolution
 - i. Keep pressing 2 until you reach your desired snapshot resolution
- Press 3 to set the update rate
 - i. Type the desired update rate (see notes)
- Press 4 to set the serial port baud rate
 - i. Keep pressing 4 until you reach the desired baud rate (see notes)
- After you are done setting your SF30, Use the spacebar to run the serial port, as shown in the screen capture below



1.4 SF30 Serial port settings

Note: If using 9600 baud rate for your application, make sure you lower your update rate to 286; or a “baud rate too low” error will show up.

Note: The SF30 saves the settings for the future usage. If the last opened port is a USB port, make sure you change the active data port to serial to run the serial port.