

## Distributor - SAC-ASI-J-Y-B-PUR-2,0-FS SCO - 1407576


Please be informed that the data shown in this PDF Document is generated from our Online Catalog. Please find the complete data in the user's documentation. Our General Terms of Use for Downloads are valid (<http://phoenixcontact.com/download>)



AS-Interface distributor with a high degree of protection, for a branch from two flat-ribbon conductors to a 2.0 m PUR round cable with straight M12-SPEEDCON socket



### Key Commercial Data

Packing unit	1 STK
GTIN	 4 046356 779968
GTIN	4046356779968

### Technical data

#### Mechanical characteristics

Number of positions	4
Insertion/withdrawal cycles	≥ 100 (M12 connector)
Connection method	AS-i penetration technique
Length of cable	2 m
Color	black
Tightening torque, min.	1.65 Nm
Degree of protection	IP65/IP67

#### Ambient conditions

Ambient temperature (operation)	-25 °C ... 75 °C (Plug / socket)
	-25 °C ... 80 °C (cable, flexible installation)
	-40 °C ... 80 °C (cable, fixed installation)
Ambient temperature (storage/transport)	-25 °C ... 85 °C
Degree of protection	IP65
	IP67

#### Material data

Housing material	PBT
Contact material	CuSn

# Distributor - SAC-ASI-J-Y-B-PUR-2,0-FS SCO - 1407576

## Technical data

### Material data

Contact surface material	Au
Material	CuSn (M12 contact)
	TPU GF (M12 contact carrier)
	Ni/Au (M12 contact surface)
	TPU (M12 handle)
Cable gland material	Zinc die-cast, nickel-plated

### Electrical characteristics

Rated voltage (III/3)	≤ 32 V
Rated current	≤ 4 A

### Pin assignment

Position = wire color (signal) = position (optional)	1 (M12 socket)   BN   AS-i+   3.1 (AS-i distributors)
	2 (M12 socket)   WH   AUX-   4.2 (AS-i distributors)
	3 (M12 socket)   BU   AS-i-   3.2 (AS-i distributors)
	4 (M12 socket)   BK   AUX+   4.1 (AS-i distributors)
	5 (M12 socket)   N.C.

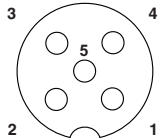
### Line characteristics

Cable type	PUR halogen-free black
Cable abbreviation	LIF9Y11YFHF
UL AWM style	20549 / 10493
Conductor cross section	4x 0.34 mm <sup>2</sup> (Signal line)
AWG signal line	22
Conductor structure signal line	42x 0.10 mm
Core diameter including insulation	1.25 mm ±0.05 mm
External cable diameter	4.3 mm ±0.2 mm
Wire colors	brown, white, blue, black
External sheath, color	black
Transmission medium	Copper
Overall twist	4 wires, twisted
Outer sheath, material	PUR
Material conductor insulation	PP
Conductor material	Bare Cu litz wires
Ambient temperature (operation)	-40 °C ... 80 °C (fixed routing)
	-25 °C ... 80 °C (Flexibly installed)

## Drawings

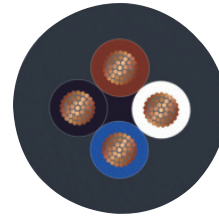
# Distributor - SAC-ASI-J-Y-B-PUR-2,0-FS SCO - 1407576

Schematic diagram



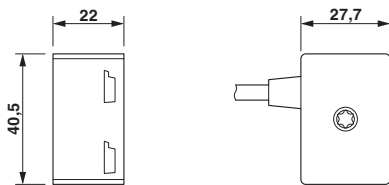
Pin assignment M12, PIN 1: AS-i +, PIN 2: AUX -, PIN 3: AS-i -, PIN 4: AUX +, PIN 5: Not used

Cable cross section



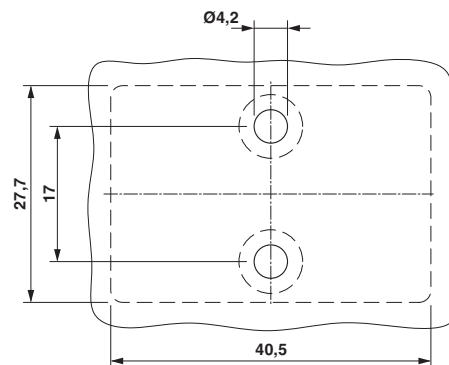
PUR halogen-free black [PUR]

Dimensional drawing



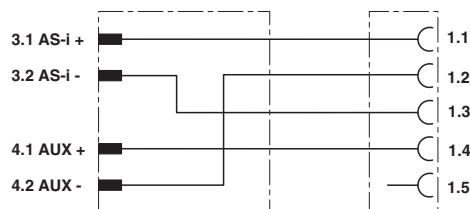
Distributor, AS-Interface

Dimensional drawing



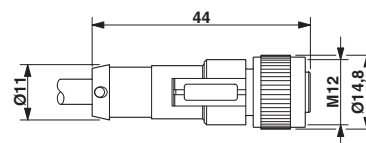
Distance and position of the mounting holes

Circuit diagram



Contact assignment of the AS-Interface distributor

Dimensional drawing



M12 x 1 socket, straight